



# BBS Road Runner

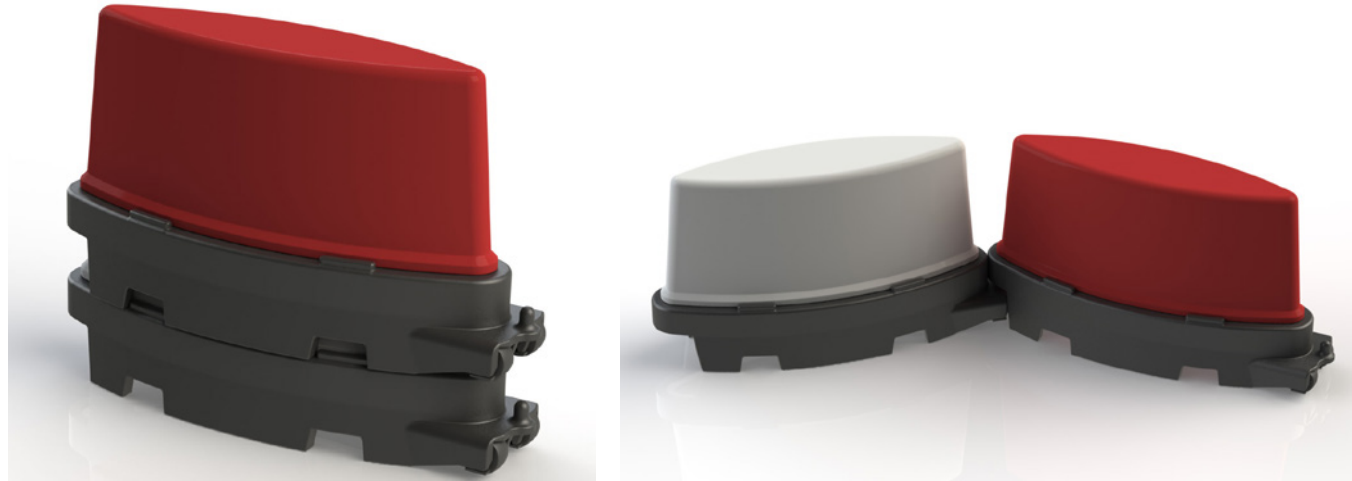
The safe solution for temporary delineation.

The interlocking base design of the BBS Road Runner allows for quick installation and is ideal to create a temporary delineation system whilst preventing unwanted ease of movement.

- Self weighted - no need to secondary fill with sand or water
- Ergonomic design reduces wind resistance
- Individual items can be moved easily, having two wheels on the back - the wheels only work once the barrier is tilted
- Interlocking pin on tail joins connect with underside of adjoining unit to create lanes
- Top section supplied in Red and White as standard. Can be manufactured in corporate colours, minimum orders will be applicable
- Base section supplied in Black as standard
- Fork lift slots on the base
- Can stack 10 high / 24 per pallet
- Top manufactured from Virgin LLDPE
- Base manufactured from recycled PVC
- By Weight 92% recycled material
- Manufactured in the UK

### Applications

Inner City Areas / City Centres / Major Street Works / Construction  
 Civils / Railway Stations / Rail Maintenance / Rail Replacement Works  
 Airports / Terminals / Events / Traffic / Utility / Council  
 Excavation Sites / Pedestrian Safety Works  
 Car Parks -Indoor and Outdoor



### Barrier Specifications

Length: 1.1m  
 Height: 0.6m  
 Base Width: 0.36m  
 Base unit self weighted: 21kg  
 Total weight: 22.5kg

**QuickSafe** Next Day Delivery  
 and Installation Available

24 hour Nationwide  
 Delivery and Installation  
 Service available.  
 for Sale or Hire

- Traffic Management
- Streetworks and Pedestrian Safety
- Safety and On-Site Security
- Events and Festivals

